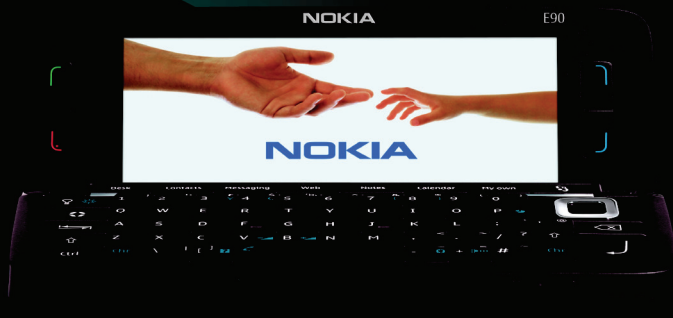


# Using Nokia Maps



**Nokia E90 Communicator**

**NOKIA**  
Eseries

# Nokia E90 Communicator Using Nokia Maps

## Legal Notice

Copyright © 2007 Nokia. All rights reserved. Portions of the Nokia Maps software are © 1996–2002 The Free Type Project. All rights reserved.

Nokia, Nokia Connecting People, Eseries and E90 Communicator are trademarks or registered trademarks of Nokia Corporation. Other product and company names mentioned herein may be trademarks or tradenames of their respective owners.

Reproduction, transfer, distribution or storage of part or all of the contents in this document in any form without the prior written permission of Nokia is prohibited.

Nokia operates a policy of ongoing development. Nokia reserves the right to make changes and improvements to any of the products described in this document without prior notice.

To the maximum extent permitted by applicable law, under no circumstances shall Nokia or any of its licensors be responsible for any loss of data or income or any special, incidental, consequential or indirect damages howsoever caused.

The contents of this document are provided "as is". Except as required by applicable law, no warranties of any kind, either express or implied, including, but not limited to, the implied warranties of merchantability and fitness for a particular purpose, are made in relation to the accuracy, reliability or contents of this document. Nokia reserves the right to revise this document or withdraw it at any time without prior notice.

The availability of particular products and applications and services for these products may vary by region. Please check with your Nokia dealer for details, and availability of language options.

Copyright to the Windows screenshots belongs to Microsoft.

# Contents

<b>Introduction.....</b>	<b>4</b>	<b>Extra services .....</b>	<b>14</b>
System requirements.....	4	Turn-by-turn navigation.....	14
GPS .....	4	Purchasing navigation.....	14
Positioning methods and server.....	5	Using navigation.....	15
<b>Getting started.....</b>	<b>6</b>	Guides.....	16
Internal GPS receiver.....	6	Downloading a guide.....	16
Setting up network connections.....	6	Searching or browsing a guide.....	16
Getting started with the map.....	6	<b>Settings .....</b>	<b>17</b>
<b>Choosing and finding locations .....</b>	<b>9</b>	Network settings.....	17
Choosing a location from the map.....	9	Routing settings.....	17
Searching for an address.....	9	General settings.....	18
Working with results lists.....	10	Map.....	18
Choosing a contact.....	10	<b>Using Nokia Map Loader.....</b>	<b>19</b>
Searching for a location nearby.....	10	PC requirements.....	19
Searching for a location at a remote position.....	11	Installing Nokia Map Loader.....	19
Choosing a landmark.....	11	Downloading maps.....	20
Planning a route.....	11	<b>Troubleshooting.....</b>	<b>22</b>
Saving a location.....	12	<b>Shortcuts .....</b>	<b>24</b>
Sharing a location.....	13		

# Introduction

With Nokia Maps, you can see the current location on the map, browse maps for different cities and countries, search for addresses and different points of interest, plan routes from one location to another, and save locations as landmarks and send them to compatible devices.

The use of Nokia Maps requires downloading of map data. The maps are free of charge. However, your service provider might charge for the transfer of the map data. Please ask your provider for details.

You can also purchase extra services such as city guides and a turn-by-turn navigation service with voice guidance.

## System requirements

- Nokia E90 Communicator.
- Packet data connectivity.
- Device memory or compatible memory card with at least 5 MB of free space.

## GPS

The Global Positioning System (GPS) is operated by the government of the United States, which is solely responsible for its accuracy and maintenance. The accuracy of location data can be affected by adjustments to GPS satellites made by the United States government and is subject to change with the United States Department of Defense civil GPS policy and the Federal Radionavigation Plan. Accuracy can also be affected by poor satellite geometry. Availability and quality of GPS signals may be affected by your location, buildings, natural obstacles, and weather conditions. The integrated GPS receiver of your Nokia E90 Communicator works best outdoors since this allows reception of GPS signals.

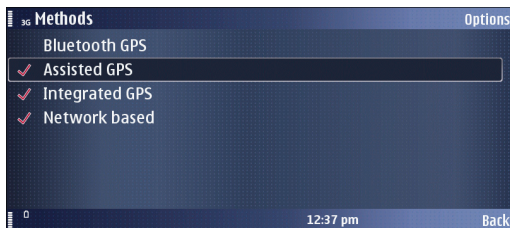
GPS should only be used as a navigation aid. It should not be used for precise location measurement and you should never rely solely on location data from the GPS receiver for positioning or navigation.

## Positioning methods and server

The integrated GPS receiver of your Nokia E90 Communicator may have difficulties providing reliable positions in some environments. Therefore it is suggested that before using Nokia Maps you also activate the Assisted GPS (A-GPS) that uses assistance servers with good satellite signal to provide positioning information.

To set the active positioning methods:

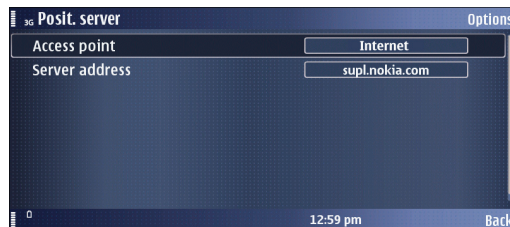
- 1 Select  > *Tools* > *Settings* > *General* > *Positioning* > *Positioning methods*.



- 2 Select the methods you want to use by scrolling to the method and selecting *Options* > *Enable*. Make sure have *Assisted GPS* and *Integrated GPS* enabled.
- 3 Select *Back* to accept the settings.


In addition to the positioning methods, set also the positioning server used to access GPS data.

- 1 Select  > *Tools* > *Settings* > *General* > *Positioning* > *Positioning server*.



- 2 In *Access point*, press the scroll key and select an access point that is available in the environment where you plan to use Nokia Maps. Note that a wireless LAN access point is usually not ideal for navigating. In *Server address*, press the scroll key and type in the address of your positioning server. The default server is **supl.nokia.com**.
- 3 Select *Back* to accept the settings.

# Getting started

Select  > *GPS* > *Maps*.



## Internal GPS receiver

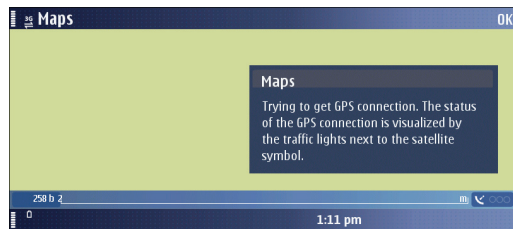
Your Nokia E90 Communicator has an internal GPS receiver. You can use it for detecting your current position and for turn-by-turn navigation (extra service). The GPS receiver takes its power from the battery. Using the GPS receiver may drain the battery faster.

## Setting up network connections

When you use Nokia Maps for the first time, you may need to define an internet access point for downloading map information for your current location.

## Getting started with the map

When you open Nokia Maps, you see an overview of the globe. To find your GPS position, press **0** or select *Options* > *Find place* > *GPS position*. When the device asks for confirmation to search for GPS signal, answer *OK*.



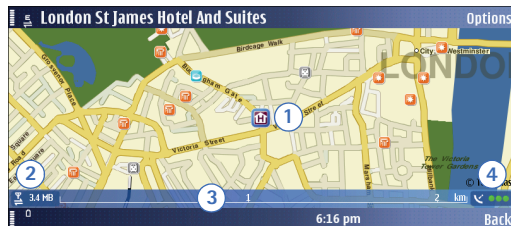
This starts searching for a satellite signal, and Nokia Maps starts to locate your device, and zooms in to your current location. At the same time, Nokia Maps downloads the map of your current location. The maps are automatically saved in the device memory or on a compatible memory card (if inserted).

You can browse the map, show information about the different locations shown on it and, for example, choose them for route planning and turn-by-turn navigation (extra service).

Digital cartography may be inaccurate and incomplete to some extent. Never rely solely on the cartography that you download for use in this device.

Downloading maps may involve the transmission of large amounts of data through your service provider's network. Contact your service provider for information about data transmission charges.

You can also use Nokia Map Loader. This PC application allows you to select and download maps of available regions or countries to your PC and transfer them to your Nokia E90 Communicator. You can also download voice skins for turn-by-turn navigation. For more information, see "Using Nokia Map Loader", p. 19 and maps.nokia.com.



The details of the map are explained in the following:

- 1 GPS position / selected location** – The blue square indicates your current GPS position or a selected position on the map. The map not only shows streets and squares, but also points of interest such as restaurants, cultural attractions, car parks, and so on.

You can define the depth of detail of the map by choosing which types of locations are displayed. One-way streets are marked with a red arrow pointing in the direction in which the street can be driven.

- 2 Data transfer indicator and data counter** – The data transfer indicator shows any data transfer activity on your device. The indicator blinks when data is being transferred. The data counter displays the amount of data transferred in the current session.
- 3 Scale bar** – The scale bar shows the scale depending on the actual zoom level. Through the scale bar, you may estimate the distance between two points on the map. The system of measurement used is displayed in the middle of the scale bar (metric or imperial). You can change the system of measurement in the [Settings](#).
- 4 GPS signal indicator** – The GPS indicator shows the availability of the GPS signal, as well as its strength. The strength is indicated by traffic lights next to the satellite symbol. The more lights there are visible, the stronger the signal. When the device is searching for a GPS position, the lights are blinking yellow. When a GPS signal is detected, the lights appear green. When no GPS signal is detected, the lights appear red.

The map is oriented towards north by default. However, during navigation, the orientation may change, for example to improve the visibility of turns. Therefore, a compass rose appears on the map during navigation, displaying the orientation of the map.

One-way streets are marked with blue arrows pointing in the driving direction.

Note the difference between "GPS position" (your actual geographic position) and "selected" location/position, which is any other than the GPS position. You may return to the "GPS position" at any time by selecting *GPS pos.*

- To zoom in, press **left Shift** in the Nokia E90 Communicator keyboard, or press \* in the cover phone keyboard.
- To zoom out, press **right Shift** in the Nokia E90 Communicator keyboard, or press # in the cover phone keyboard.
- To find a location nearby, start typing. Select *Find* to start searching.
- To find a city or an address, select *Options > Find place > Address*. To choose a location from a list of landmarks, select *Options > Find place > Landmark*.
- To send a location in a text message, multimedia message, e-mail, or using Bluetooth or infrared connectivity, or to save a location as a landmark or image, select *Options > Use this place > Send* or *Save*.
- To be guided to a location turn by turn or to plan a route, select *Options > Use this place > Route from* or *Route to*.
- To change the map colours, zoom in or out, and toggle between 2D and 3D views, select *Options > Map options*.



# Choosing and finding locations

## Choosing a location from the map

In addition to streets, squares, and parks, the map also contains locations such as car parks, petrol stations, and public transport. You can select these for turn-by-turn navigation (extra service), routing, and so on. The name of the selected location or street is shown in the upper edge of the screen.

When browsing to a certain direction, map information may not be available on your device for that area. Wait while Nokia Maps downloads the required map data.

- To return to your GPS (or last known) position, choose [GPS pos.](#)

When you place the cursor near a symbol, Nokia Maps automatically focuses on this location and centres it on the screen.

You can choose the location for planning your route and for turn-by-turn navigation (extra service). You can also send the location in a text or multimedia message, save it as a landmark or as an image, or search for nearby point of interests. If a phone number is saved for a location, you can also call this phone number directly.

If no location is selected when you press the scroll key, the context-menu opened applies to the nearest street.

## Searching for an address

Select [Options](#) > [Find place](#) > [Address](#).

The address search allows you to search for specific cities or streets. The search results can, for example, be displayed on the map and be used for route planning or turn-by-turn navigation (extra service).

You can enter the address details, such as [Number](#), [Street](#), [City/Zip](#) code, and [Country/Region](#). You do not need to enter the complete name of the location; enter a meaningful part of the name with at least 2 to 3 characters. Note that you cannot use wildcards. Note also that the address is not completed automatically since the search function does not have network access until you start the search. To start searching, select [Options](#) > [Search](#).

## Working with results lists

- To display the location on the map, press the scroll key or select *Options* > *Use this place* > *Show on map*.
- To switch between the search results once in the map view, scroll up or down.
- To plan a route to or from the location, select *Options* > *Use this place* > *Route from* or *Route to*.
- To navigate to the location (extra service), select *Options* > *Use this place* > *Navigate to*.
- To send the location, select *Options* > *Use this place* > *Send*.
- To save the location as a landmark or as an image, select *Options* > *Use this place* > *Save*.



## Choosing a contact

Another way of finding an address is to use one of your contacts if you have saved an address for it.

- 1 Select *Options* > *Find place* > *Address* > *Options* > *Select from contacts*.
- 2 Select the contact from the list, and *OK*. Add further details to the search if necessary.
- 3 To start searching, select *Options* > *Search*. Nokia Maps searches its database for the address you have entered and displays the results.

## Searching for a location nearby

If you are looking for a certain location in your surroundings, you can find it through the search function. To use the search function, just start typing.

With the search function, you can find points of interest as well as city guide entries. You cannot search for addresses.

- Enter the name of the location you are looking for, and select *Find*.

You do not need to enter the complete name of the location; you can also enter a meaningful part of the name with at least three characters. You cannot use wildcards.

An alternative way of starting the location search is through *Options* > *Find place* > *Keyword search*.

## Searching for a location at a remote position

The search function finds locations near the focus indicator. If you want to find locations at a remote location, you need to display the remote location on the map first.

For example, assume you live in New York City and are planning to spend a week with a friend in London. To find a cinema close to your friend's apartment, do the following:

- Find your friend's address through an address search, or by using one of your contacts.
- To select your friend's address in the list, select *Options > Use this place > Show on map*.
- To find cinemas near your friend's place, type "cinema". You can also search a guide (by selecting *Options > Extra services*). For more information about guides, see "Guides", p. 16.

Alternatively, you can also move the focus indicator to your friend's apartment and start searching as described above or choose a location from by category, as described below.

## Choosing a landmark

To show a previously saved landmark on the map, select *Options > Find place > Landmark*.

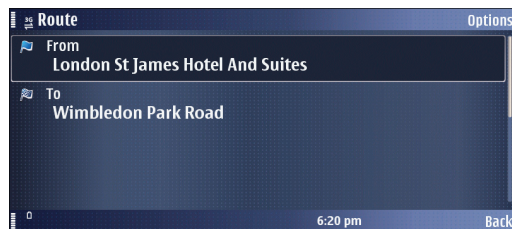
To edit the details of a landmark, select *Options > Use this place > Edit landmark*.

## Planning a route

With the route planner you can calculate a route from your current (or last known) location to a destination of your choice.

It is also possible to plan a route starting at a remote location, for example if you live in New York City, and plan to travel in London on the weekend.

To select a starting point and destination, select *Options > Use this place > Route from or Route to*.



You can use your GPS position, landmarks, recent locations, the map, or the address search.

To select the route settings, select *Options* > *Settings*. Once you have set your starting point and destination, you may select the route settings, for example, the type of route or the transport mode.

Once you have set a starting point and destination, and selected your settings, you can show your route. To display the itinerary, select *Options* > *Show route*.

The *Itinerary* tab lists the single waypoints of a route, and shows the turns and the distance between them.



To switch between the *Itinerary* and *Summary* tabs, scroll left or right.

Select *Options* and from the following:

- *Show on map* – To show a waypoint on the map. To switch between waypoints, scroll up or down.
- *Start navigation* – To start turn-by-turn navigation (extra service) with GPS.
- *Start simulation* – To run a simulation of turn-by-turn navigation without GPS.

## Saving a location

You can save your favourite destinations as landmarks to quickly access them when planning your route.

The *Save* command is in different context-sensitive menus throughout the application. The following procedure is just an example.

- 1 Browse the map.
- 2 To open the context-sensitive menu, press the scroll key.
- 3 Select *Save* > *As landmark*.
- 4 Edit the name of the landmark if necessary, and select *OK*.
- 5 Choose a category for the landmark, and select *OK*.

You can also take a screenshot of the map (*Save* > *As image*). The image is saved in your device's default gallery folder.

## Sharing a location

You can share any location with your friends by sending it for example in a text, multimedia, or e-mail message, or by using Bluetooth or infrared connectivity. The information about the location is sent as a geocode and text (except in text messages, in which it is sent as text only).

The *Send* command is in different context-sensitive menus throughout the application. The following procedure is just an example.

To share a location, do the following:

- 1 Browse the map.
- 2 To open the context-sensitive menu, press the scroll key.
- 3 Select *Send*.
- 4 Select the sending method (for example, as a text or multimedia message, or via Bluetooth or infrared).
- 5 Compose your message as usual.

You can also take a screenshot of the map to send it, for example in a multimedia or e-mail message. See "Saving a location", p. 12.

## Extra services

### Turn-by-turn navigation

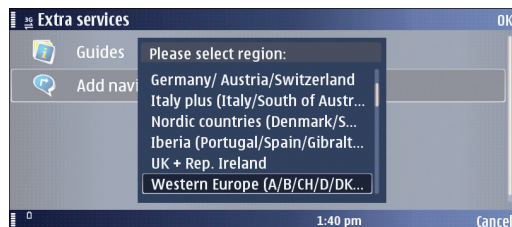
Turn-by-turn navigation guides you along the shortest or quickest route from A to B – turn by turn, with voice guidance and in 3D view.

The turn-by-turn navigation is an extra service and needs to be purchased prior to its use.

### Purchasing navigation

To purchase turn-by-turn navigation:

- 1 Select *Options* > *Extra services* > *Add navigation*. Select *Accept* to accept the terms and conditions.
- 2 Select *Purchase*, and then select the region for which you want to acquire a turn-by-turn navigation license and how long you want to use the service. You can choose between paying securely with your credit card and having the amount charged to your phone bill.



**Note:** The first time you are purchasing a navigation license with a Nokia E90 Communicator, you activate a free 3-day navigation trial license. This trial license is valid for navigation on all supported navigable maps, allowing you to test the navigation function prior to purchasing it. You are not charged for using the 3-day navigation trial license, but note that data transfer costs may arise due to downloading of map data.



**Tip:** You may need to update your navigation license if for example the device software has been updated. In this case, when you are asked to select the length of the license, select *Options* > *Update* and confirm by selecting *Yes*. This connects to the license server and checks your licenses and regains them for the remaining time of your navigation license. The update is free of charge.

- 3 If you select to have the payment charged to your phone bill, the device will send rate SMS messages. If you select to pay with a credit card, enter your credit card details:
  - Select the type of your card (*VISA*, *Master Card*, or *AMEX*), and press the scroll key.

- Enter the *Card number*, *Card verification number*, *Expiration month* and *Expiration year*.

- Select *Options* > *Purchase*. Confirm the payment by selecting *OK*.
- To get a receipt of the transaction and a license code, enter your name and e-mail address. Select *OK*.

After the payment is processed, the turn-by-turn navigation features are activated.

## Using navigation

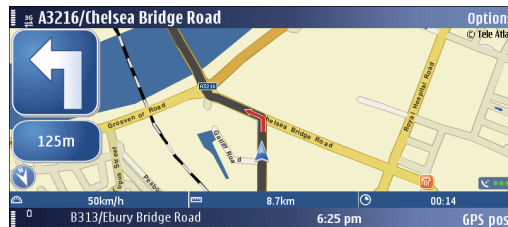
To navigate, do the following:

- 1 Choose or search a location for navigation.
- 2 Select *Options* > *Use this place* > *Navigate to* command. Navigation starts, provided you have a GPS connection.
- 3 If you use turn-by-turn navigation for the first time, you are prompted to choose the language for the voice guidance. Wait while the voice guidance files are downloaded.



**Tip:** You can also download voice guidance files using Nokia Map Loader. This way you can avoid data transfer costs for your mobile device. For more information, see "Using Nokia Map Loader", p. 19.

By default, the route is displayed in black. The red arrow shows the directions, and the blue arrow shows your GPS position. Turns are displayed in the upper left corner and indicated through voice guidance.



You can browse the map while navigating. Choose a new destination if you change your mind.

Select *Options* and from the following:

- *Alternative route* – To calculate an alternative route.
- *Voice guidance* > *Repeat command* – To repeat voice guidance.
- *Voice guidance* > *Volume* – To adjust the volume of voice guidance. A volume bar appears on the screen. To increase the volume, scroll up; to decrease the volume, scroll down.

- *Map options* – To adjust display settings.
- *Map options > Arrow mode* – To show the upcoming turns in arrow mode. To return to the navigation map, select *Options > Map options > Map mode*.
- *Stop navigation* – To stop the turn-by-turn navigation.

When calculating the route, your routing settings are taken into account.

Turn-by-turn navigation is not available in the pedestrian mode.

## Guides

The guides contain detailed information about locations, such as descriptions, contact information, prices, opening times, and so on. A location found in a guide may, for example, be displayed on a map and be used for route planning and turn-by-turn navigation (extra service).

Guides are an extra service and need to be purchased prior to their use.

## Downloading a guide

- 1 Select *Options > Extra services > Guides*. The *My guides* list is displayed.
- 2 Scroll right to get to *Nearest guides*. You may be asked if you want to update the guide catalogue. Confirm if you want to update the catalogue.

In the city guide shop, any city guides available for your region are displayed. To see city guides for other regions or countries, or by vendor, scroll right.

- 3 Choose a guide from the list, and select *OK*. Confirm if you want to download the guide.
- 4 Choose your payment option, and select *OK*.
- 5 Enter your payment details.
- 6 Confirm the payment by selecting *OK*. You may be prompted to choose your internet access point for processing the payment. After the payment is processed, a confirmation is displayed on the screen. Select *OK*.
- 7 To get a receipt of the transaction and a license code, enter your name and e-mail address. Select *OK*.

The guide is now activated. You are now ready to browse or search it.

## Searching or browsing a guide

To open and browse a city guide, do the following:

- 1 Select *Options > Extra services > Guides*.
- 2 After opening the guide, scroll right to open *Find*.
- 3 Enter a *Name*.
- 4 To start searching, select *Options > Search*.

To narrow the scope of your search, select *Category/ Subcategory*. You may add a starting point for your search (*Location*), as well as the size of the area within which the application searches around the starting point (*Distance*).

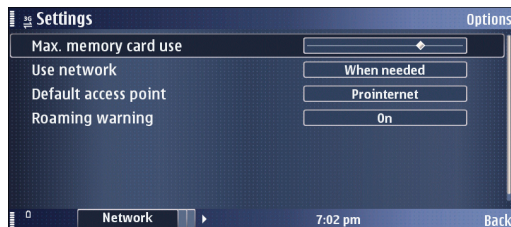


# Settings

## Network settings

Select *Options* > *Settings* > *Network*, and from the following:

- *Max memory card use* – You can limit the amount of map information that can be stored on a compatible memory card. Drag the slide bar left or right to decrease or increase the amount of space the map information may use. When the storage limit is reached, the most seldom used information is deleted.
- *Use network* – To allow Nokia Maps to establish an internet connection whenever needed, for example, for downloading map information, select *When needed*. To deny network usage, select *Never*.
- *Default access point* – Select one of the internet access points defined in your device's network settings.
- *Roaming warning* – Select to be warned when your device registers to a network other than the service provider of your own.



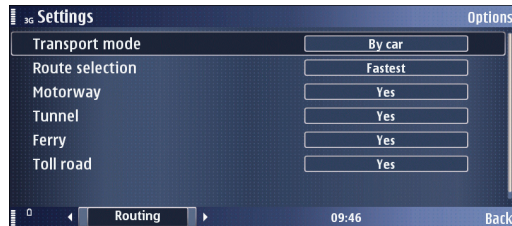
## Routing settings

Select *Options* > *Settings* > *Routing*, and from the following:

- *Transport mode* – To regard one-way streets as normal streets and also choose paths leading through parks, and so on, select *On foot*.
- *Route selection* – Select whether to calculate the route by fastest or shortest route.

You can also choose to allow or avoid motorways, tunnels, ferries, and toll roads.

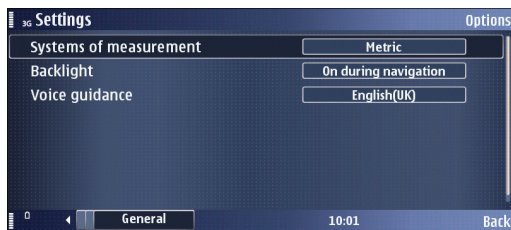
There may be some city areas with restricted access (for example the London Congestion Zone in Central London) that are regarded as toll roads by Nokia Maps. Therefore, if you choose to avoid toll roads, you are not guided through these areas. However, there is no warning if you enter these zones accidentally.



## General settings

Select *Options > Settings > General*, and from the following:

- *Systems of measurement* – Select between metric (km, m) and imperial (mi, yd).
- *Backlight* – Select between *Default*, *Always on*, or *On during navigation*.
- *Voice guidance* – Select the language used for voice guidance navigation.



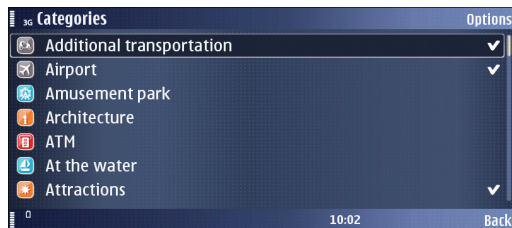
## Map

Select *Options > Map options*, and from the following to adjust viewing options for the map:

- *Zoom in / Zoom out* – To increase or reduce the size of the map.
- *2D/3D* – To toggle between the 2D and 3D views.
- *Change map colours* – To change the colour scheme of the map.

To choose which kinds of elements are displayed on the map:

- 1 Select *Options > Map options > Categories*.
- 2 Mark any category you want to have displayed on the map. Unmark those that should be hidden.
- 3 To select or deselect all categories, select *Options > Mark all / Unmark all*.



# Using Nokia Map Loader

Nokia Map Loader is a PC application that allows you to download maps to your Nokia E90 Communicator. This will save you costs on data transfer and allow you to download maps for whole countries or areas in a single operation.

Nokia Map Loader will download maps from a Map server, through PC to one of the following:

- A memory card connected to your Nokia E90 Communicator via USB in data transfer mode.
- A memory card plugged into a PC via a memory card reader.

The Map Loader downloads and caches the list of available maps from the map server each time you start the application.

During the startup the application looks for a memory card that used with the Nokia Maps application before.

The Map Loader identifies a compatible memory card by searching for a cookie during the startup. The cookie is a file written by the maps application onto the memory card. The cookie contains information like size of the memory card, path to the map data on the memory card.

The Map Loader will only download a map of an entire country if the file size of the map is smaller than 60 MB. Maps larger than that will be split up into smaller regions.

## PC requirements

Nokia Map Loader requires the following applications and hardware to be available on the PC:

- Windows XP operating system.  
Support for Windows Vista will be communicated later.
- Microsoft .NET-Framework 3.0 installed. This will be installed by the Map Loader if necessary.
- At least 800 x 600 screen resolution.
- An Internet connection for downloading map data.



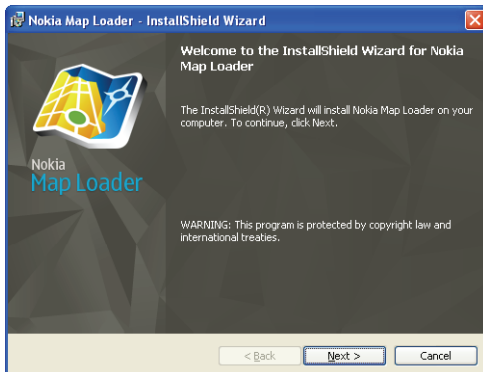
**Note:** You cannot choose the language of the user interface. The installer will identify the language of your Windows operating system. If the Windows operating system language is not supported by the Map Loader, the application will be installed with the English user interface.

## Installing Nokia Map Loader

To install Nokia Map Loader on a PC:

- 1 Download Nokia Maps Loader from <http://maps.nokia.com>.

- 2 Run the Nokia Map Loader exe file and click **Next** on the Welcome page.



- 3 Read and accept the license agreement, and click **Next**.
- 4 Select a folder for the application and click **Install**.
- 5 Click **Finish** to complete the installation.

## Downloading maps

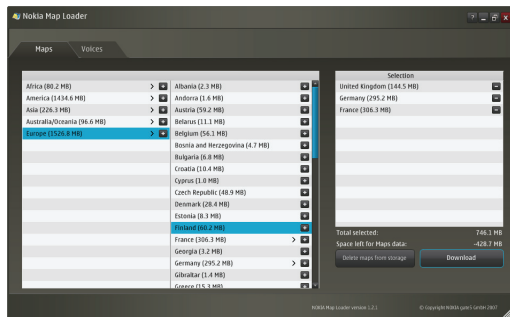
To get connected:

- 1 Connect your Nokia E90 Communicator to your PC using the USB cable. It is recommended that you use your device memory card through a memory card reader.



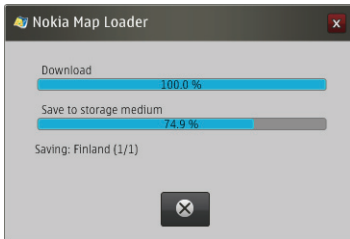
**Note:** You must use the Maps application on the Nokia E90 Communicator at least once before you use the Map Loader application. This is to ensure that the Maps Application Cookie is stored on the device memory card.

- 2 Start Nokia Map Loader.



- 3 Select a region. To add a map to the list of selected maps, click the **+** symbol. To remove a map from the list of selected maps, click the **-** symbol. The **Total selected** indicates the total file size of the selected maps. The **Space left for Maps data** shows the amount of free space on the device.
- 4 Click **Download** to download the selected maps to your device, or **Delete maps from storage** to delete map content on your device.

- 5 A progress indicator shows the status of the download and informs when the download is complete.



- 6 Click OK.

# Troubleshooting

**Q:** Why can't I hear voice guidance via my Nokia 616 Car Kit?

**A:** If you are navigating using Nokia Maps and Nokia 616 Car Kit, and you don't hear the voice guidance via Nokia 616 Car Kit, do the following:

- Make sure you are using the Bluetooth Handsfree mode in the Nokia E90 Communicator. To do this, check the Bluetooth settings and set *Remote SIM mode* to *Off*.
- In the Nokia 616 Car Kit, press the speaker button (🔊) twice to set the loudspeaker mode to *Loudspeaker always active*, indicated by the (( )) icon on the Nokia 616 Car Kit display.
- The *Loudspeaker always active* mode is available in the Nokia 616 Car Kit with the latest software version, so check the software versions of your Nokia 616 Car Kit by dialling **\*#0000#**. Turn the Navi wheel to check the separate software version of the display unit. Software versions should be 4.57 (Nokia 616 Car Kit main unit) and 4.13 (the display unit) or later.

**Q:** What happens to purchased navigation features if I change my mobile device?



**A:** In the event of a mobile device change, please contact Nokia Customer Care via [www.nokia.com/support](http://www.nokia.com/support).

Before calling Nokia Customer Care, please make sure that you have the following information available:

- Date of your license purchase.
- License type, that is, navigation region and length of the license.
- Contact information (telephone number and/or email address).
- Order code and license code, if available. You get these from the email receipt of your purchase.
- Current IMEI code. To see your IMEI, please enter **\*#06#** on your device.
- Previous IMEI code if your mobile device was exchanged.
- Payment method. Do not give your credit card details.
- Phone number, including country and network provider code.

**Q:** Why will the Map Loader application not start?

**A:** To ensure that Nokia Map Loader is functioning properly, do the following:

- Make sure that you have the latest version of Nokia Map Loader.  
You can check the version number in the bottom right hand corner of the application window.  
You can download the latest version in [maps.nokia.com](http://maps.nokia.com).
- Make sure that the device is connected to the PC via USB cable in data transfer mode and using a memory card.  
If you receive an error message that memory card is in use, check the following:
  - 1 Check that no application using the memory card as storage (such as *Maps* or *Gallery*) is open. Press  for a few seconds to see which applications are open. Close all applications.
  - 2 Check that you are using the memory card as message storage. Select  > *Messaging* > *Options* > *Settings* > *Other* > *Memory in use*.
- Make sure that there is a memory card inserted in your Nokia E90 Communicator.
- Check that the device and the memory card have been used with the *Maps* application at least once.
- Make sure that there is enough free memory on your memory card for the selected content.  
If you download a lot of data, the download time may be quite long as the maps are downloaded from a server. The connection speed may be affected by server

congestion, the Internet connection speed, and the USB speed. Note that memory card reader is faster than USB cable connection.

For more information, see [maps.nokia.com](http://maps.nokia.com).

# Shortcuts

Map view	
*	Zoom in (the cover phone keyboard)
#	Zoom out (the cover phone keyboard)
0	Get GPS signal and find your current location
Shift left	Zoom in (the Communicator keyboard)
Shift right	Zoom out (the Communicator keyboard)
Space	Switch between 2D and 3D modes (the Communicator keyboard)

Turn-by-turn navigation view	
*	Zoom in (the cover phone keyboard)
#	Zoom out (the cover phone keyboard)
Shift left	Zoom in (the Communicator keyboard)
Shift right	Zoom out (the Communicator keyboard)
1	Switch between 2D and 3D modes (the Communicator keyboard)
2	Switch map colours
3	Send current location
4	Repeat voice guidance
5	Choose alternative route
6	Show satellite info
7	Mute volume